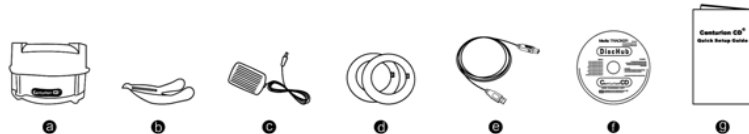


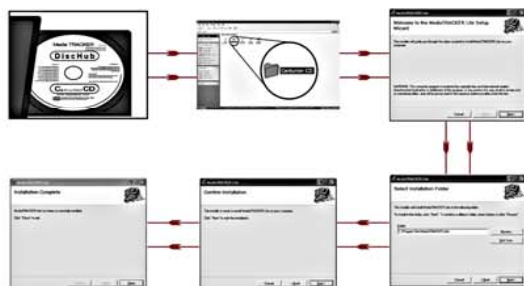
1. Packing List for Centurion CD

- Centurion CD unit
- CD Catcher
- Power Adapter
- 80mm CD Adapter
- USB Cable
- Installation Disc
- Quick Setup Guide



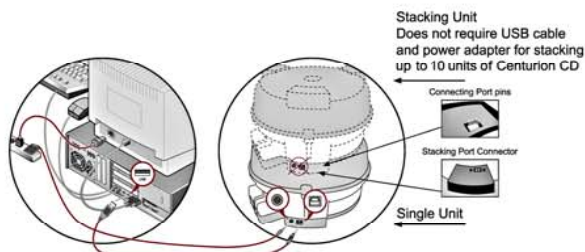
2. Software Installation

- If installing this software in Windows, administrator rights are needed for the installation to be successful
- Ensure that you have no applications running on your computer
- To begin, insert the provided software CD into your computer's Optical Disc Drive
- From My Computer, double click the drive letter associated with your Optical Disc Drive
- Goto the Centurion CD Folder and open the Media TRACKER Lite Application Folder
 - For Mac Users :- Open the Macintosh OS (Universal) folder and run the MediaTRACKER Lite Mac OS X file
 - For Windows Users :- Open the Microsoft Windows OS folder and run the Setup file
- Follow the prompts to install the MediaTRACKER Lite Software onto your computer



3. Hardware Installation

- Ensure that you have the MediaTRACKER Lite software installed and running in your computer
- Plug the CCD unit into your computer using the USB Cable provided. The square end of the USB cable should be connected to the CCD and the rectangular end to the Computer
- Plug the power adaptor into the CCD's and turn the power ON
- Install the CD Catcher. The CCD Catcher is designed to hold ejected CDs and to make CD insertion easier



Note: The Centurion CD must be placed on a flat stable surface. If the unit is operated on a tilted or unstable surface, the discs may not sit correctly in the carousel, and problems with loading and unloading discs could occur.

4. Installing Additional Units

- The simplest way to add more CCD units to your PC is to stack them in a tower. CCD units are designed to stack on top of each other, up to 10 units high, eliminating the need to connect each separate unit to a power source and to the computer
- To add a unit to a stack, simply align the bottom of the new Centurion CD unit with the top of the unit below it, so that the front of each unit is facing in the same direction
- Gently place the new CCD unit on top of the bottom unit and the units will automatically connect using the stacking ports at the top and bottom of the CCD
- Never stack more than 10 units together
- Ensure that the stack is on a sturdy, level surface and out of the reach of children

***Note : When multiple CCD's are placed on top of each other on a single stack, you are only required to plug the USB and the power adaptor to the bottom unit. DO NOT CONNECT THE OTHER UNITS.**

5. Maintenance and Safety

- Never insert any foreign object into the CCD. This may damage the unit as it is designed to hold full sized 120mm Optical media only
- The 80mm disc adapters supplied are not to be used with optical drives
- Never place your operating system CD or MT Lite CD inside your CCD unit. This may impede disaster recovery
- Avoid exposing CCD to moisture and extreme temperatures
- Do not allow any chemicals to come into contact with the CCD unit
- Never disassemble or touch the inside of the CCD unit. This could result in an electric shock. There is no user serviceable parts inside the CCD unit
- Clean the outside of the CCD unit by wiping with a clean dry cloth. Never use harsh or abrasive cleaners or organic solvents on any part of the CCD unit

6. To Start Using the Centurion CD

- Always ensure that the hammer has struck before inserting a disc. Inserting before the hammer striking might cause the disc not being recorded in the library
- To insert a disc, align it with the slot at the front of your CCD unit and gently but firmly push its outer edge until the disc is completely inside the unit
- Once the disc is in, a Check-In window will pop up. Select "New" to enter new disc name. The carousel will move to the next available slot. You can proceed to insert another disc
- For more information on the other features, please check the Help Topics under the Help Menu
- To remove a disc, "Check out" a disc, the disc will be ejected and it will rest on the CD Catcher. Lift the disc upwards and away from the unit

7. Functions of MediaTRACKER software

1. File Menu

Open – Selected disc loaded to drive and disc contents displayed in Windows explorer

Show in Explorer – Selected disc loaded to drive and displays in Windows "My Computer" Explorer

Edit Custom Volume Name – Allows user to edit the volume name of the selected disc

Properties – Show disc information and the physical location of the disc



2. Edit Menu

Find – Comprehensive search function of files and disc

Preferences – To set Password, Backup and Restore and to Register Hardware



3. Media Menu

Batch Add to Library – In this mode, any media inserted into any of the computer's disc drive will be scanned and the contents will be added to the MediaTRACKER Library. After the media is added to the library, the media will be ejected from the drive. The disc can then be added to the Centurion CD. A new disc can now be added by repeating the process

Add to Library – Select the drive letter/disc label of a disc from this submenu to add the contents of the disc to the MediaTRACKER library

Protect – Add password to media

Check Out – Eject disc from Centurion CD

Check Out for User – Eject disc from Centurion CD and user name can be added

Remove from Library – Remove the volume name and contents of Checked Out disc from library



4. View Menu

Organizer – List all Centurion CD's that is connected

Name – To personalized name of the Centurion CD

Check Out All Media – To Check Out all media's in the Centurion CD

Eject Empty Slots :- To eject medias in the Centurion CD that is not recorded in the Library



Please feel free to visit us at our online helpdesk at: <http://digistoresolutions.helpserve.com> if you need further assistance.